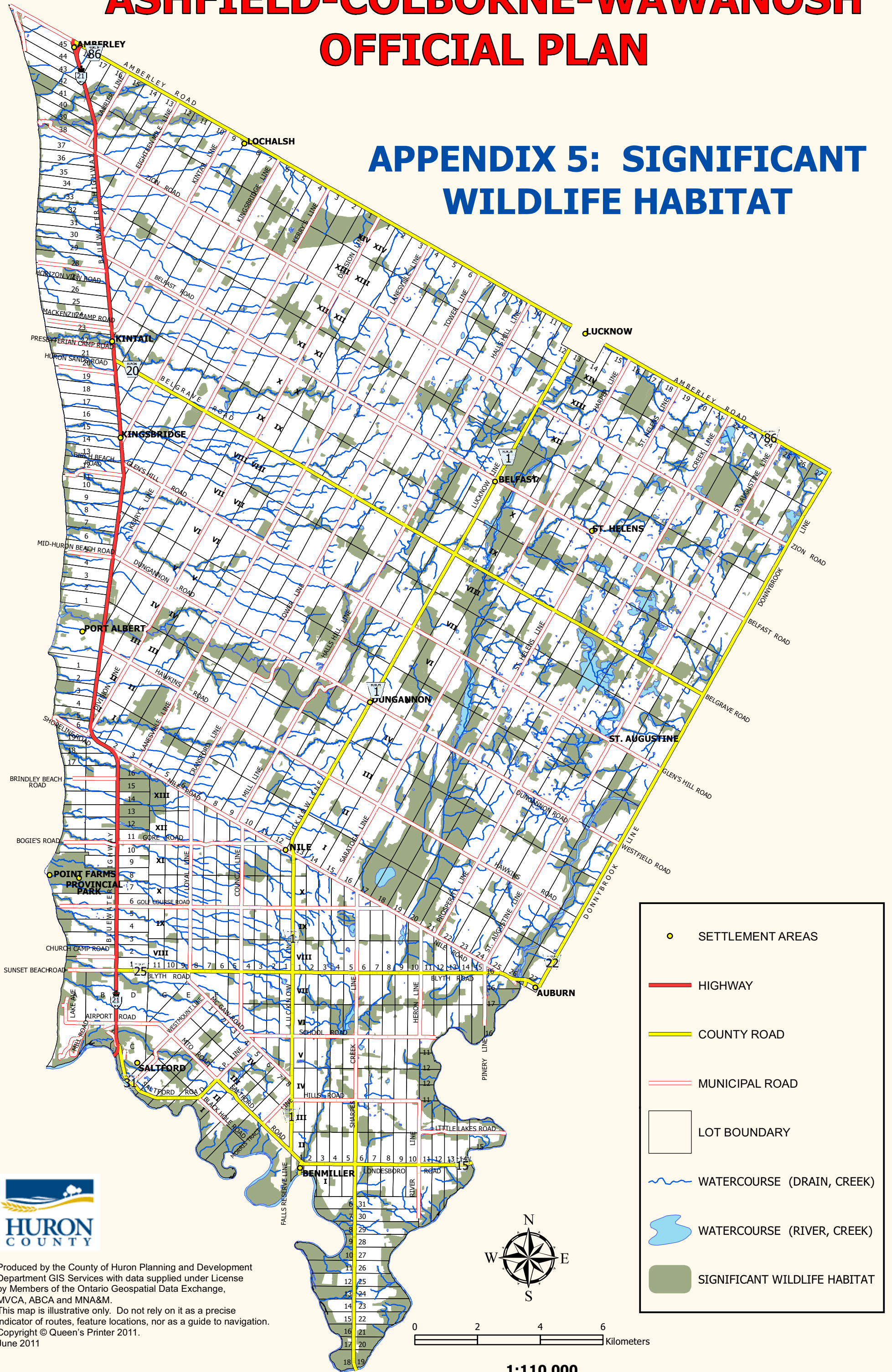


ASHFIELD-COLBORNE-WAWANOSH OFFICIAL PLAN

APPENDIX 5: SIGNIFICANT WILDLIFE HABITAT



Produced by the County of Huron Planning and Development
 Department GIS Services with data supplied under License
 by Members of the Ontario Geospatial Data Exchange,
 MVCA, ABCA and MNA&M.
 This map is illustrative only. Do not rely on it as a precise
 indicator of routes, feature locations, nor as a guide to navigation.
 Copyright © Queen's Printer 2011.
 June 2011