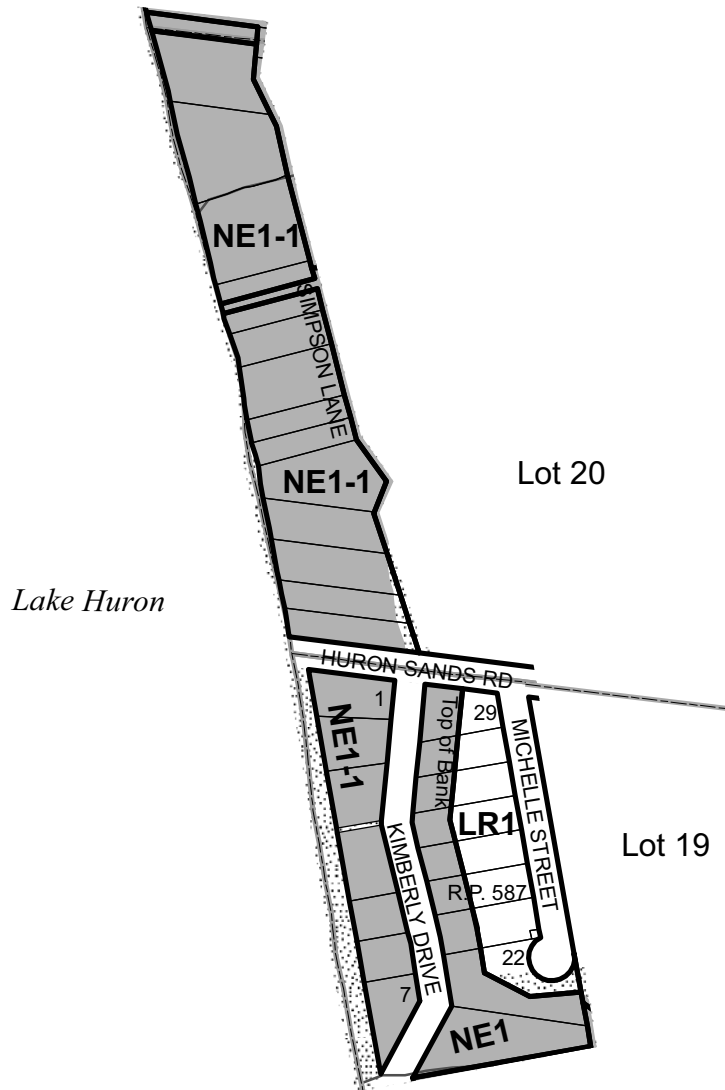


Amendments

Ashfield-Colborne-Wawanosh

Key Map 22a
Ashfield Ward -
Lakeshore

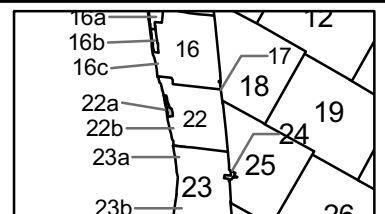
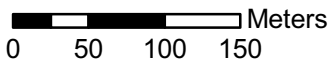
REVISION DATE February 1, 2008



NE5	Lot Boundaries	Roads
NE1	Property Boundaries	Rivers / Waterbodies
AG1-h (See Section 4.11)	Zone (AG1 unless otherwise noted)	Open Landfill
Holding Zone	Conservation Authority Regulated Lands	Closed Landfill
		500m Landfill Buffer



1:5,000



NOTE: Where zone label appears over NE1 or NE5 shading, zone label denotes applicable zone.