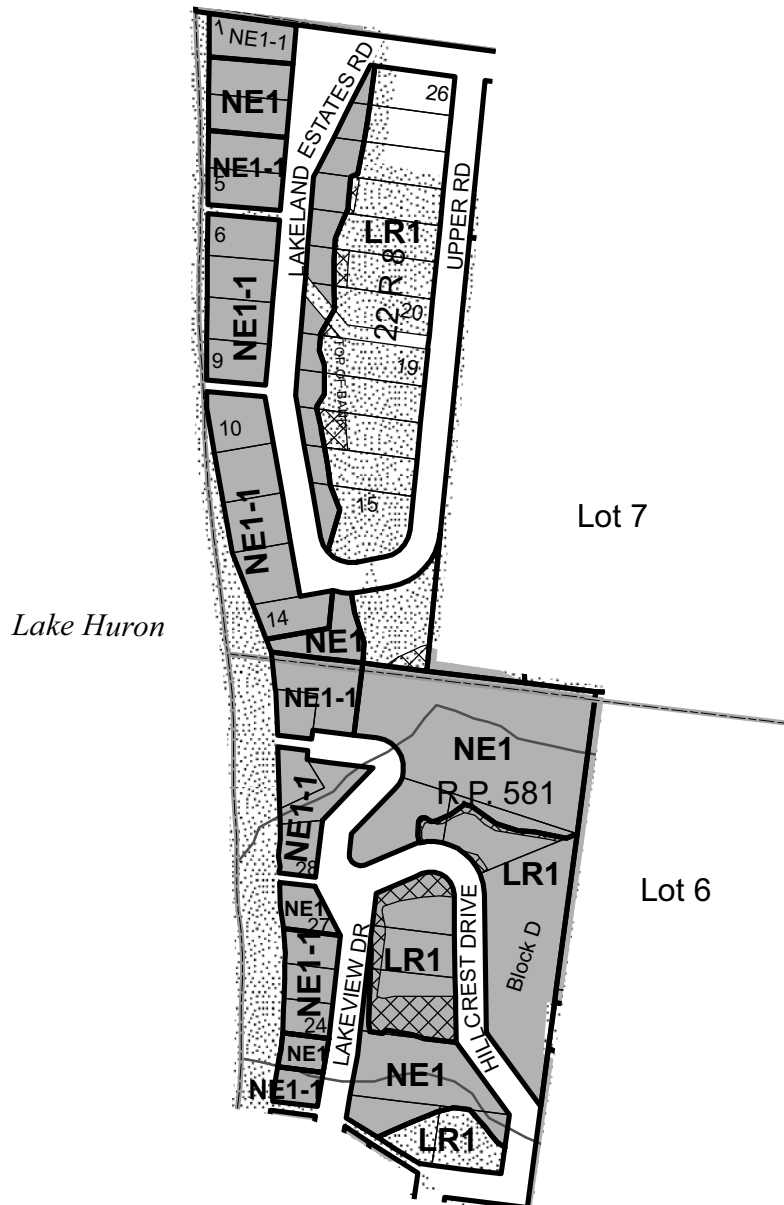


Amendments

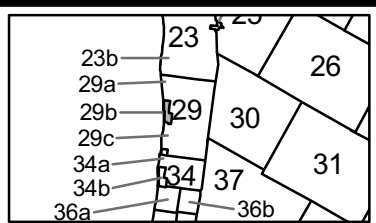
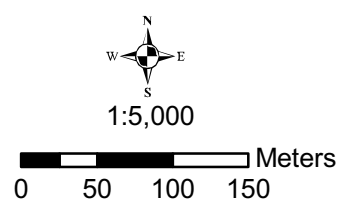
Ashfield-Colborne-Wawanosh

Key Map 29b
Ashfield Ward -
Lakeshore

REVISION DATE February 1, 2008



	NE5		Lot Boundaries		Roads
	NE1		Property Boundaries		Rivers / Waterbodies
	AG1-h (See Section 4.11)		Zone (AG1 unless otherwise noted)		Open Landfill
	Holding Zone		Conservation Authority Regulated Lands		Closed Landfill
			500m Landfill Buffer		



NOTE: Where zone label appears over NE1 or NE5 shading, zone label denotes applicable zone.