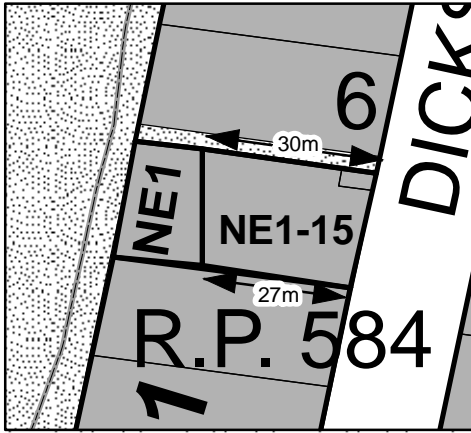


Amendments

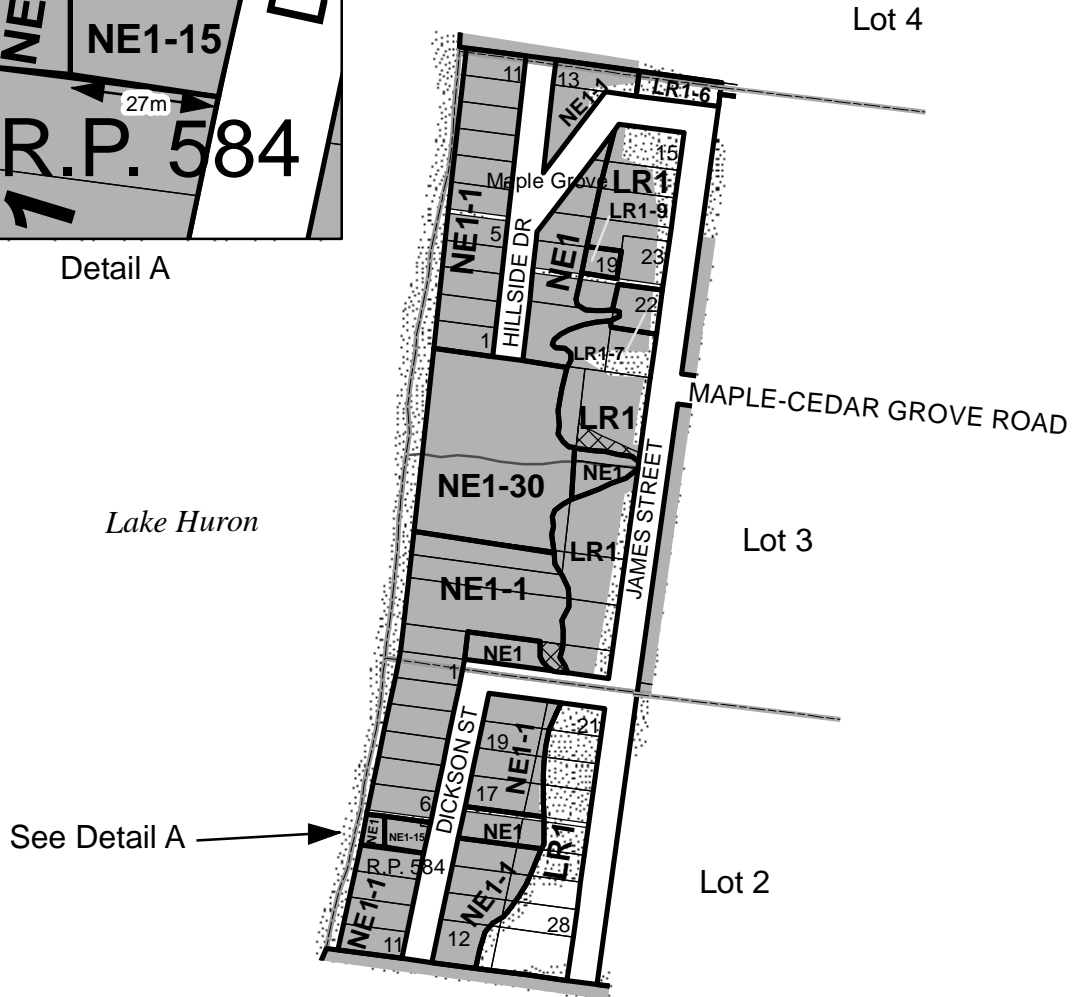
REVISION DATE June 3, 2008

**Ashfield-Colborne-Wawanosh**

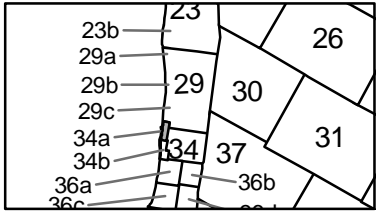
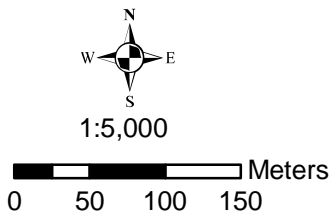
**Key Map 34a**  
**Ashfield Ward -**  
**Lakeshore**



Detail A



	NE5		Lot Boundaries		Roads
	NE1		Property Boundaries		Rivers / Waterbodies
	AG1-h (See Section 4.11)		Zone (AG1 unless otherwise noted)		Open Landfill
	Holding Zone		Conservation Authority Regulated Lands		Closed Landfill
			500m Landfill Buffer		



**NOTE: Where zone label appears over NE1 or NE5 shading, zone label denotes applicable zone.**