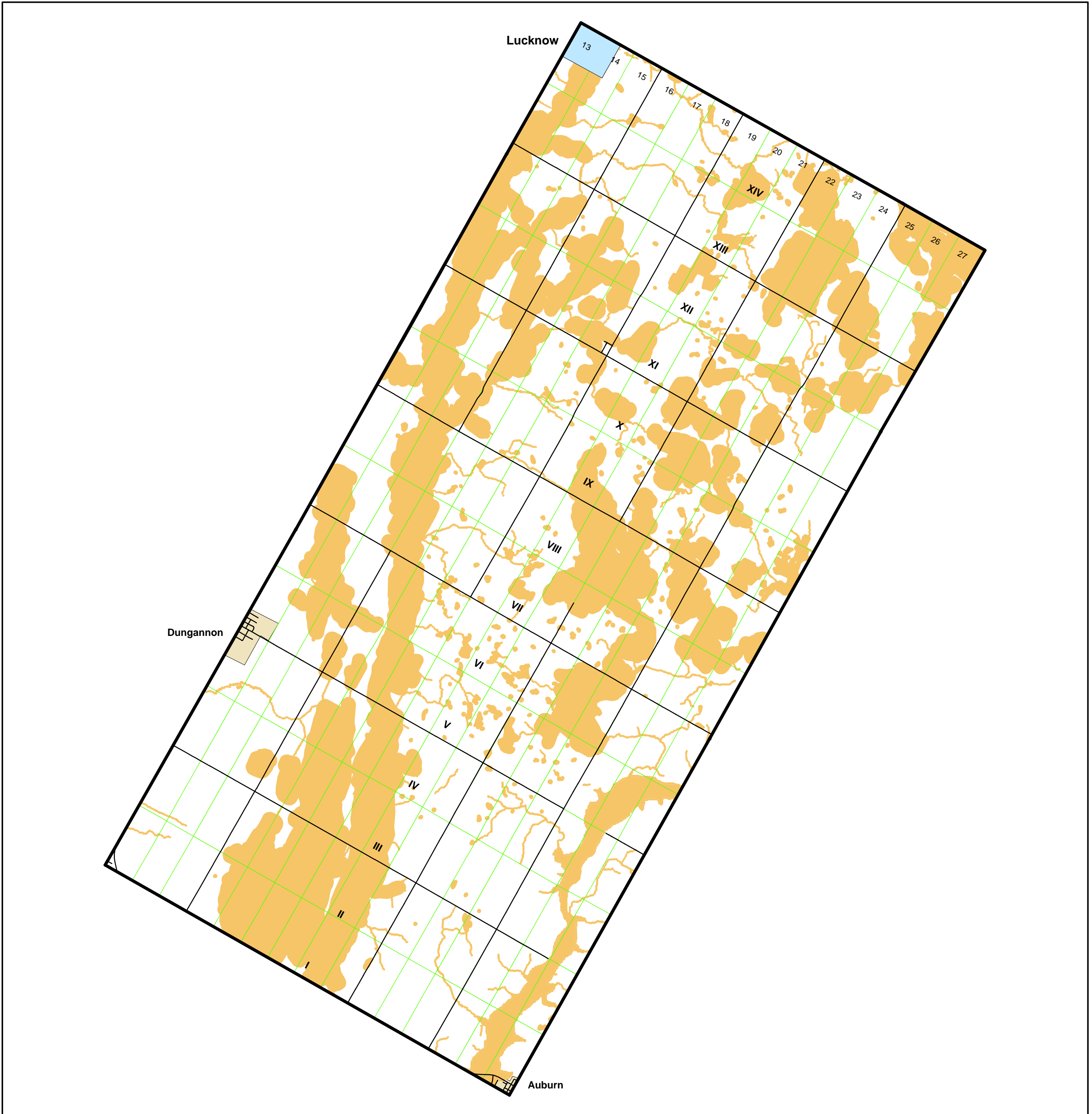


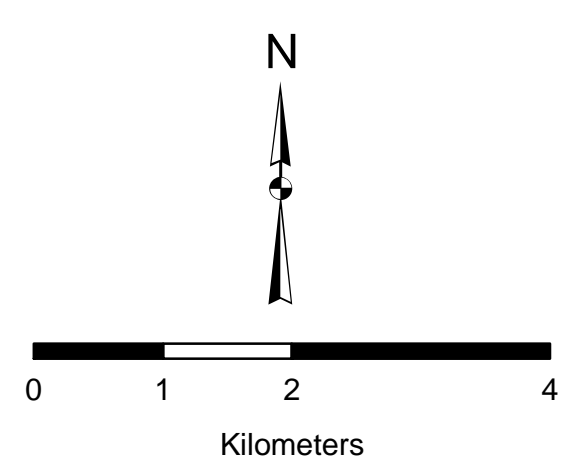
Ontario Regulation 97/04
Development, Interference with Wetlands and Alterations to Shorelines and Watercourses
Approximate Regulated Area



Township of Ashfield-Colborne-Wawanosh
West Wawanosh Ward



Produced by the Maitland Valley Conservation Authority under license with Ontario Ministry of Natural Resources, Copyright (c) Queen's Printer 1992, 2006



February, 2006

Legend

- Approximate Regulated Area
- W.Wawanosh Ward Boundary
- Settlement Areas
- Roads
- Lot Lines
- Refer to Urban Map